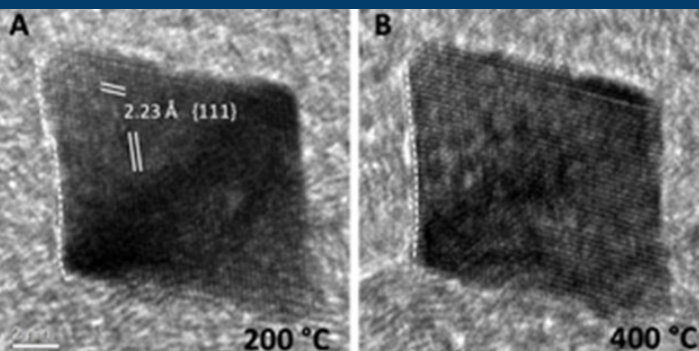


Physics of Nanoscale Systems

e.g. Heggen *et al.* Thermal aging experiments on octahedral Pt-Ni catalyst nanoparticles



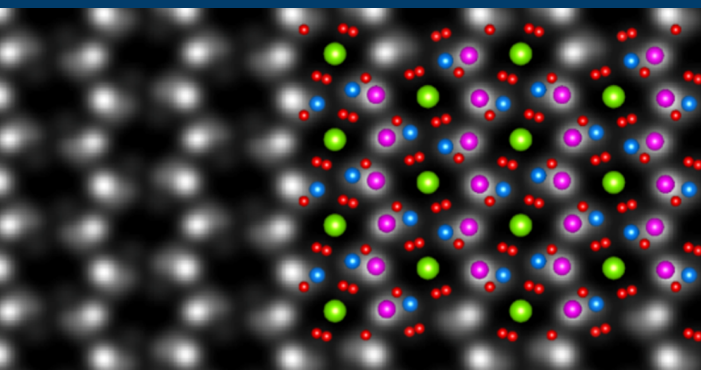
www.er-c.org



er-c@fz-juelich.de

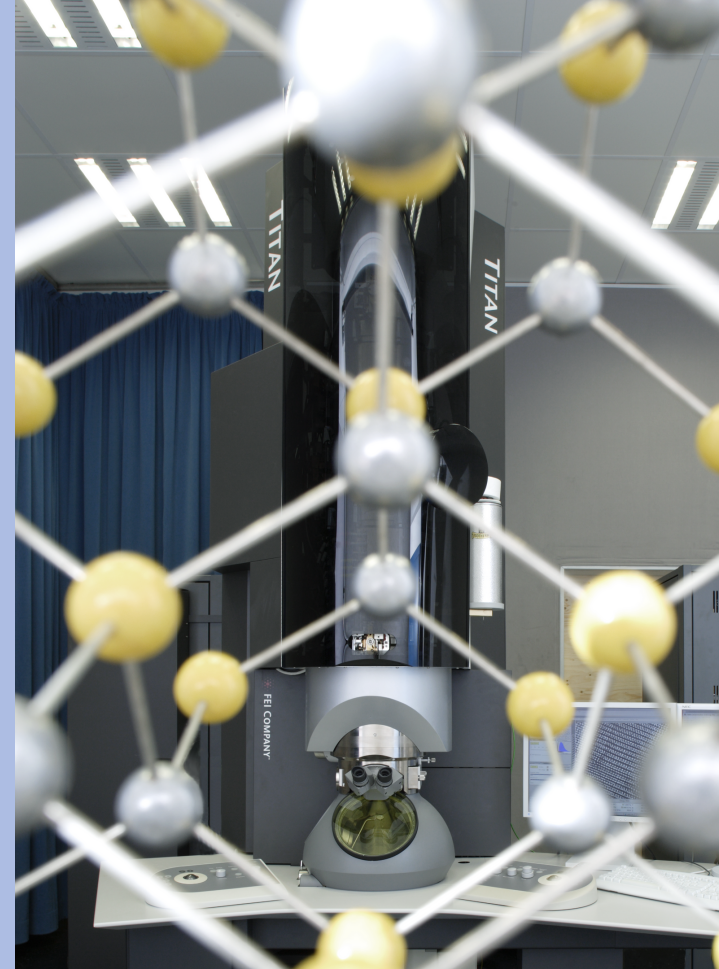
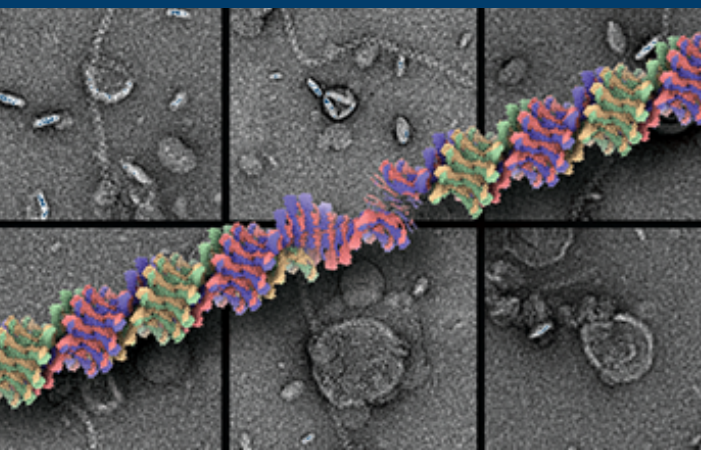
Materials Science and Technology

e.g. Meledina *et al.* HR HAADF-STEM image of LiCoPO₄ cathode material



Structural Biology

e.g. Sachse *et al.* Vps24 forms filamentous structures that interact with liposomes



USER FACILITY OF THE ERNST RUSKA- CENTRE

FOR MICROSCOPY AND
SPECTROSCOPY WITH
ELECTRONS

Published by

Forschungszentrum Jülich GmbH
Ernst Ruska-Centre
52425 Jülich
Germany

Printed by

Forschungszentrum Jülich

Photos

Forschungszentrum Jülich

WHO WE ARE

The Ernst Ruska-Centre (ER-C) for Microscopy and Spectroscopy with Electrons operates a national user facility that is open to universities, research institutions and research laboratories in industry. We are located on the campus of Forschungszentrum Jülich and run our user facility jointly with RWTH Aachen University.

Our operational services are based on the guiding principle that external users are accompanied by experienced scientists and technical support staff.

Our user facility houses some of the world's most advanced electron microscopes and tools for nanocharacterization, several of which have been funded by the BMBF, the German Research Foundation and the Helmholtz Association.

WHAT WE OFFER

The ER-C user facility provides external users with scientific assistance and access to a wide spectrum of electron microscopes:

Equipment ranging from standard electron microscopes to highly-specialised aberration corrected transmission electron microscopes

Sub-Å-resolution imaging and spectroscopy

Quantitative measurements of electromagnetic field distributions

In situ transmission electron microscopy

Advanced data analysis

Detailed information about the instruments and measurement techniques that are available for external access can be found in the Facilities section of the ER-C user facility web pages www.er-c.org

HOW IT WORKS

All researchers and students from university research groups or research laboratories in academia and industry can apply for external access to our equipment and scientific assistance in the field of advanced electron microscopy.

Are you interested in using our experimental or methodological resources?

Please submit your application to er-c@fz-juelich.de. After successful evaluation you will obtain access to our equipment and receive assistance from our experienced scientific and technical staff. If required, they will help you with sample preparation, microscope operation and sample characterization and subsequent data analysis. Please find more details in the Access/ Project submission section of the www.er-c.org web pages.